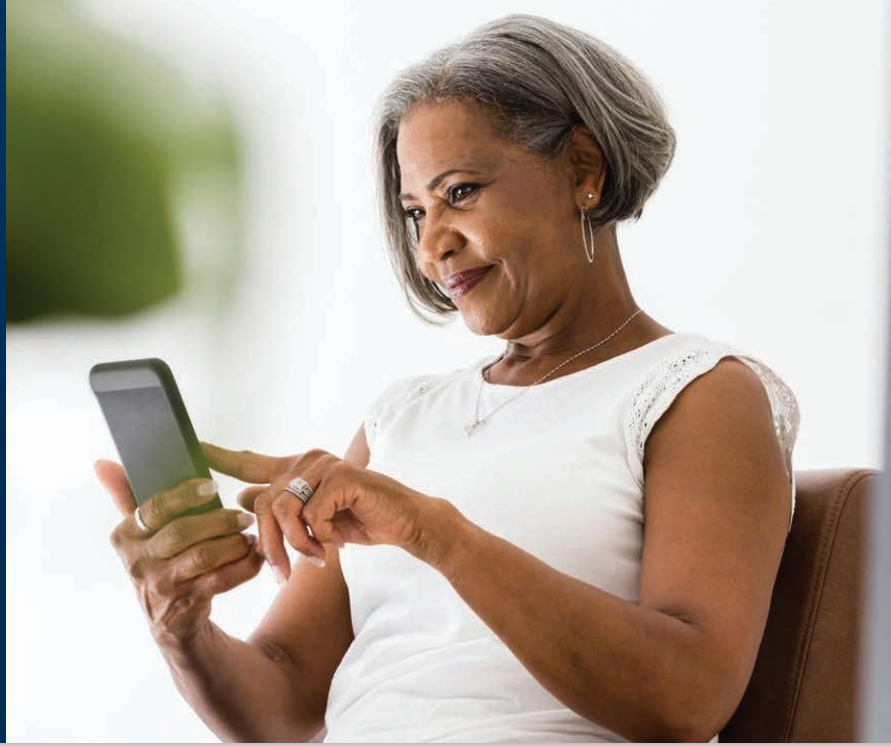


A COST SAVINGS PROGRAM to Take Population Health Management of Heart Failure Patients VIRTUAL



 No cost to patients

 Care coordination

 Robust technology

Advanced clinical management program to **reduce administrative burden** and **improve outcomes** for heart failure patients

eMAX Health's population health care management is powered by a sophisticated technology platform. The Virtual First Heart Failure Management Program targets low, moderate, and high-risk ischemic and non-ischemic heart failure patients. Patients are managed through virtual visits, remote monitoring, medication management, lifestyle guidance, predictive analytics, quality reporting, and stakeholder engagement. By enrolling patients in a virtual program, health plans have an opportunity to offer innovative, high-touch care to a high-cost population with the ongoing support of the expert team at eMAX Health.

PROGRAM OUTCOMES on average

42% Cost Savings **3:1** ROI

70% Reduction in 30-day Readmissions

COMPREHENSIVE CLINICAL MANAGEMENT PATHWAY



Management / Reduction of Heart Failure Symptoms



Appointment / Follow-up Plan Adherence



Utilization of DME



Continual VCM Patient Engagement



Remote Patient Monitoring



Medication Adherence



Diet / Exercise Plan Adherence



eMAXHealth®
Research Guided

(914) 304-8128 · info@emaxhealth.net · www.emaxhealth.net

eMAX Health is confident of its ability to **achieve success** and is willing to enter into **value-based risk shared agreements**.



AMERICAN COLLEGE of CARDIOLOGY

Our program is backed by the network and guidelines of the ACC



PROGRAM BENEFITS to PATIENTS

Virtual Value-Based Care		Face-to-Face, Fee-for-Service Model	
As needed	★	Visits	2-4 times per year
<1 hour	★	Time to Appt.	2+ weeks
Daily data	★	Data	No daily data
No facility fee	★	Fees	Likely charged a facility fee
High level of communication with family members and providers	★	Care Coordination	Very limited communication about care plan to family or other providers

Contact us to learn how the Virtual First Heart Failure Management Program can help **to create cost savings for your organization**.



eMAXHealth®
Research Guided